



IASAT

International Association for
the Study of Affective Touch



IASAT2017

Poster List

Poster Abstracts Coming Soon



LIVERPOOL
JOHN MOORES
UNIVERSITY



UCL

LINKÖPING
UNIVERSITY

- | | | |
|-----------|---|--|
| 1 | <p style="text-align: center;">Johanna Bendas
<i>University Hospital - Dresden</i></p> | <p>C-tactile mediated erotic touch perception relates to sexual desire and performance in a gender-specific way</p> |
| 2 | <p style="text-align: center;">Rebecca Böhme
<i>Linköping University</i></p> | <p>Is it you or is it me? Differentiating between self- and other-touch</p> |
| 3 | <p style="text-align: center;">Robert Cameron
<i>Pillars of Parenting Social Enterprise</i></p> | <p>Hands off our children: challenging the touch taboo in education and care contexts</p> |
| 4 | <p style="text-align: center;">Laura Case
<i>National Center for Complementary & Integrative Health, NIH</i></p> | <p>Novel characterization of affective response to deep pressure touch</p> |
| 5 | <p style="text-align: center;">Ilona Croy
<i>TU Dresden</i></p> | <p>Dynamic tactile mother-child interaction</p> |
| 6 | <p style="text-align: center;">Laura Crucianelli
<i>University College London (UCL)</i></p> | <p>The Mindedness of Maternal Touch: A longitudinal Investigation of Maternal Mind-Mindedness and Mother-Infant Touch Interactions</p> |
| 7 | <p style="text-align: center;">Chris Dijkerman
<i>Utrecht University</i></p> | <p>The relation between affective touch and pupil size.</p> |
| 8 | <p style="text-align: center;">Elin Eriksson Hagberg
<i>University of Gothenburg</i></p> | <p>The brain's response to gentle touch recorded with magnetoencephalography</p> |
| 9 | <p style="text-align: center;">Deniz Gursul
<i>University of Oxford</i></p> | <p>CT-optimal brushing reduces noxious-evoked brain activity in infants</p> |
| 10 | <p style="text-align: center;">Connor Haggarty
<i>Liverpool John Moores University</i></p> | <p>Early and Late Neural Responses to Affective Touch</p> |



- 11** Linda **Handlin**
University of Skövde
Oxytocin and Cotrisol levels in dog owners and their dogs are associated with behavioural patterns: an exploratory study.
- 12** Gijs **Huisman**
University of Twente
Effects of stroking velocity and touch stimulus on perceived pleasantness in observed affective touch
- 13** Sima **Ipakchian Askari**
Eindhoven University of Technology
Healing Touch: the effects of mediated social touch on reducing stress and anxiety
- 14** Anouk **Keizer**
Utrecht University
Perceived pleasantness of positive affective touch is modulated by the visual appearance of the arm
- 15** Louise **Kirsch**
University College London
Embodied Emotional Egocentricity Bias - A new approach to the distinction between self and other affective states
- 16** Lina **Koppel**
Linköping University
The effect of affective touch on betrayal aversion, altruism, and risk taking
- 17** Haemy **Lee Masson**
KU Leuven
Neural mechanisms of third-party affective touch experiences
- 18** Rhiannon **MacKenzie-Phelan**
Liverpool John Moores University
The skin as a multisensory social organ: Gender differences in the perception of affective touch may reflect gender-specific variation in visual and social-
- 19** Adarsh **Makdani**
Liverpool John Moores University
Microneurography: My bounty is as boundless as the C
- 20** Viola **Marx**
University of Dundee
Touching the maternal abdomen. A frame by frame analysis of fetal behavioural responses.

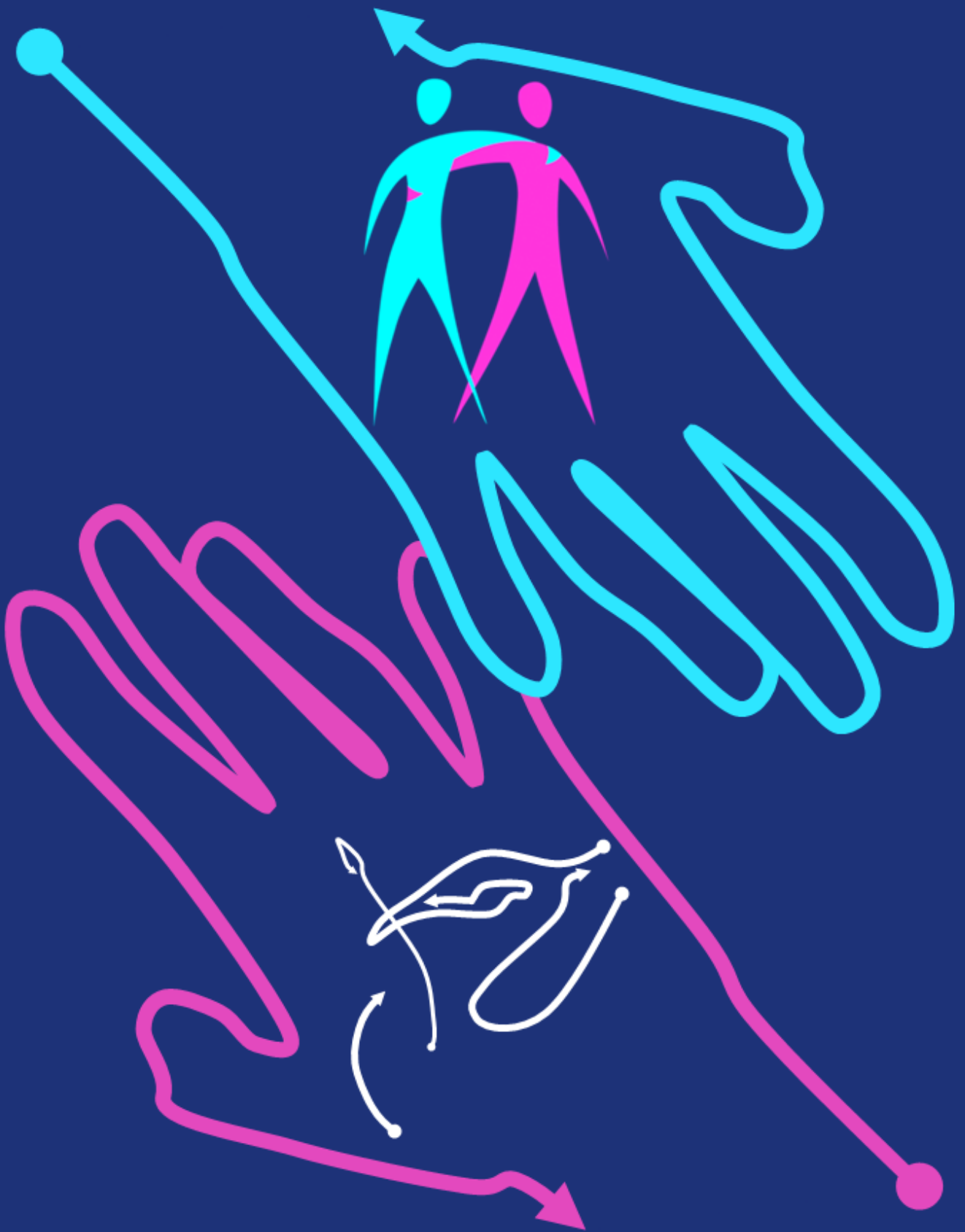


- | | | |
|-----------|--|--|
| 21 | <p>Claudia Massaccesi
<i>University of Vienna</i></p> | <p>Wanting and liking of food and social rewards</p> |
| 22 | <p>Sarah McIntyre
<i>Linköping University</i></p> | <p>Pleasantness of tactile motion does not vary with speed when C-Tactile activation is held constant</p> |
| 23 | <p>David Moore
<i>Liverpool John Moores University</i></p> | <p>Pain in autism: where to look for differences.</p> |
| 24 | <p>Jayne Morton
<i>Healthwork Occupational Health</i></p> | <p>TOUCH on the FRONTLINE- 30 years of practice.</p> |
| 25 | <p>Saad Nagi
<i>Linköping University</i></p> | <p>In-vivo electrophysiological recordings from AÎ² brush-sensitive and brush-insensitive mechanoreceptors in humans</p> |
| 26 | <p>Noreen O'Sullivan
<i>Liverpool Hope University</i></p> | <p>A-touchment: is pleasant touch discriminability dependent on attachment history?</p> |
| 27 | <p>Elena Panagiotopoulou
<i>University College London (UCL)</i></p> | <p>Pleasure to See you in Me: Affective Touch Enhances Self-Face Recognition</p> |
| 28 | <p>Ralph Pawling
<i>Liverpool John Moores University</i></p> | <p>The relationship between autonomic regulation and sensitivity to CT touch</p> |
| 29 | <p>Laura Pirazzoli
<i>Birkbeck, University of London</i></p> | <p>How does affective touch modulate arousal states? An investigation in early development</p> |
| 30 | <p>Sonia Ponzo
<i>University of Hertfordshire</i></p> | <p>Balancing Ownership: Visual Capture of Proprioception and Affectivity During Vestibular Stimulation</p> |



- | | | |
|-----------|---|--|
| 31 | <p>Federica Riva
<i>University of Vienna</i></p> | <p>Age-related changes in the neural correlates of empathy for pleasant and unpleasant touch</p> |
| 32 | <p>Judita Rudokaite
<i>Utrecht University</i></p> | <p>The relation between affective touch and emotion regulation in borderline personality disorder</p> |
| 33 | <p><i>Spare slot</i></p> | |
| 34 | <p>Isac Sehlstedt
<i>University of Gothenburg</i></p> | <p>Seen and felt affective touch delivered by a rotary tactile stimulation device: a human psychophysical study</p> |
| 35 | <p>Sharon Smith
<i>Liverpool John Moores University</i></p> | <p>Lips: a social organ?</p> |
| 36 | <p>Elya Steinberg
<i>The London School of Biodynamic Psychotherapy
Centre for Biodynamic</i></p> | <p>Get In Touch with Touch: A Powerful Tool at the Service of Psychotherapy</p> |
| 37 | <p>Timmy Strauss
<i>TU Dresden</i></p> | <p>Do not touch me! - Disrupted neural processing of social touch in patients with PTSD associated with interpersonal-traumatization</p> |
| 38 | <p>Juulia Suvilehto
<i>Aalto University
University of Turku</i></p> | <p>Cultural Universalism in Social Touch</p> |
| 39 | <p>Sarah Vaughan
<i>Liverpool John Moores University</i></p> | <p>Quantitative Sensory Testing in Autism:</p> |
| 40 | <p>Mariana von Mohr
<i>University College London (UCL)</i></p> | <p>Affective touch and attachment anxiety modulate pain in romantic couples: A laser-evoked potentials study</p> |





LIVERPOOL
JOHN MOORES
UNIVERSITY